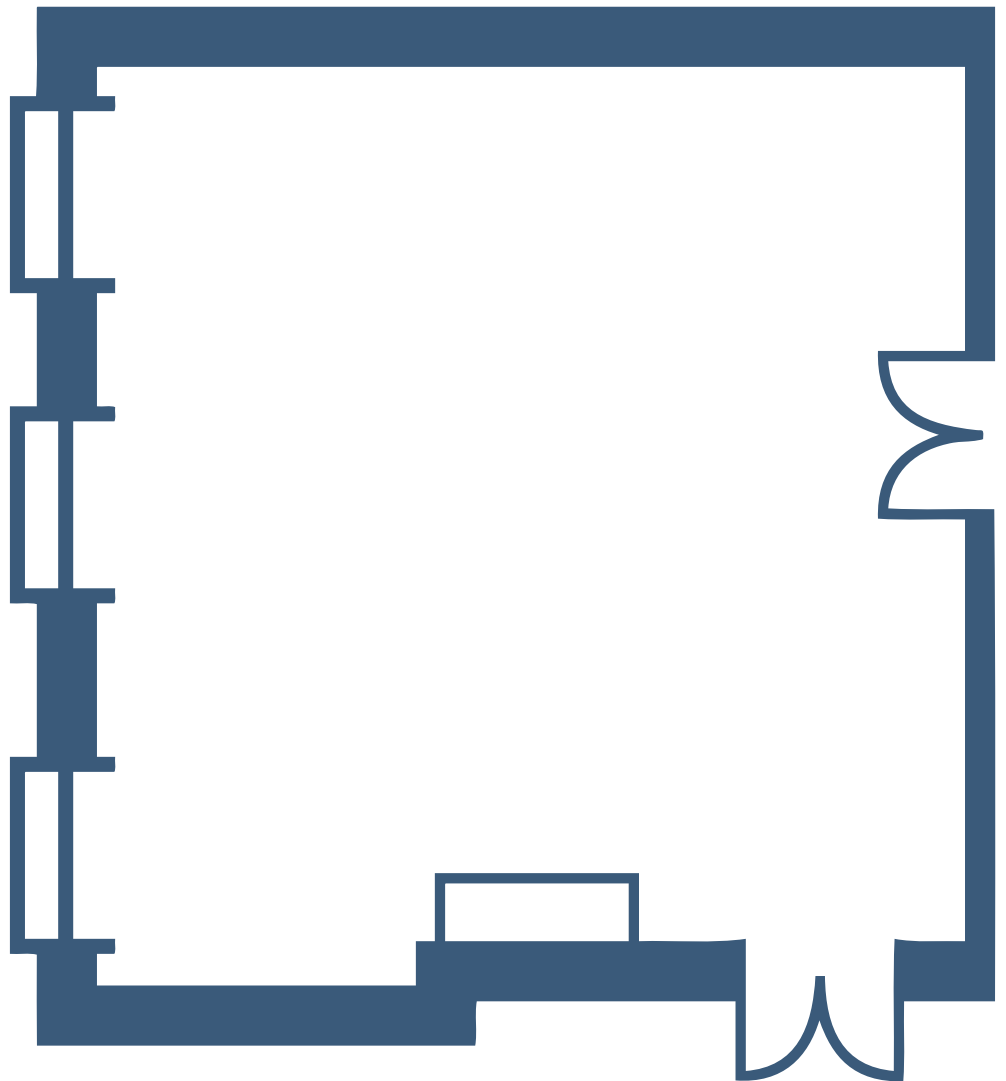


## room layouts

### TRAFALGAR ROOM 2

**TRAFALGAR ROOM 2**  
26' x 29' (754 sq ft/70 sq m)

- Ceiling height 18'
- 5 Double plug sockets
- 1 Single plug socket
- 1 Extension line/1 Direct line
- Chandelier base to floor 7'6"
- ISDN line
- Wi-Fi enabled
- broadband connection

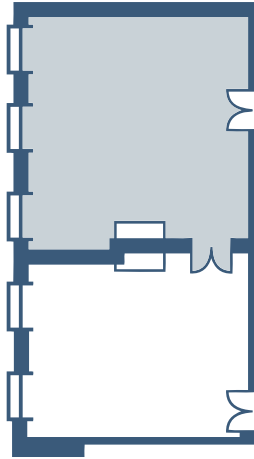


# room layouts

## TRAFALGAR ROOM 2

26' x 29' (754 sq ft/70 sq m)

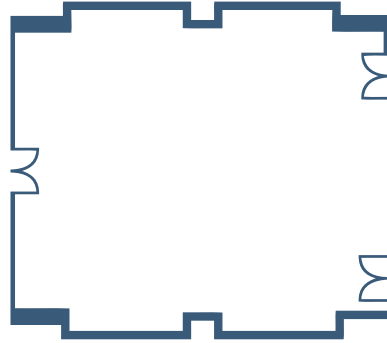
Ceiling height 18'  
5 Double plug sockets  
1 Single plug socket  
1 Extension line/1 Direct line  
Chandelier base to floor 7' 6"  
ISDN line  
Wi-Fi enabled  
broadband connection



## TRAFALGAR ROOM 1

26' x 20' (520 sq ft/48 sq m)

Ceiling height 18'  
6 Double plug sockets  
1 Extension line/1 Direct line  
Chandelier base to floor 7' 6"  
Wi-Fi enabled  
broadband connection



## BURTON ROOM

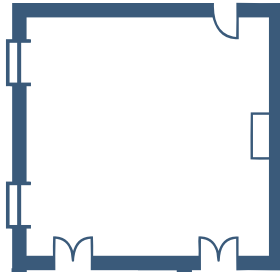
30' x 42' (1260sq ft/116 sq m)

Ceiling height 15'  
10 Double plug sockets  
1 Extension line/1 Direct line  
Chandelier base to floor 7' 6"  
3 Phase power supply  
ISDN line  
Wi-Fi enabled  
broadband connection

## ST JAMES ROOM 1

26' x 29' (754 sq ft/70 sq m)

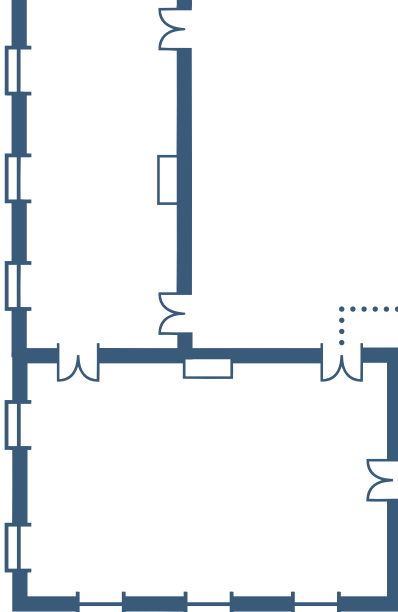
Ceiling height 19'  
6 Double plug sockets  
20 Data points  
1 Extension line  
Wi-Fi enabled  
broadband connection



## ST JAMES ROOM 2

40' x 16' (640 sq ft/60 sq m)

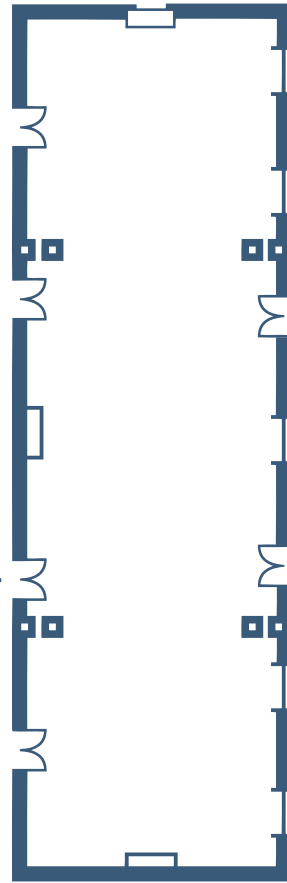
Ceiling height 18'  
8 Double plug sockets  
1 Extension line/1 Direct line  
Wi-Fi enabled  
broadband connection



## WATERLOO ROOM

27' x 43' (1,161 sq ft/107 sq m)

Ceiling height 18'  
7 Double plug sockets  
2 Extension lines/1 Direct line  
Chandelier base to floor 8' 6"  
ISDN line  
Wi-Fi enabled  
broadband connection



## NASH ROOM

30' x 100' (3,000 sq ft/278 sq m)

Ceiling height 20'  
13 Double plug sockets  
2 Extension lines/2 Direct lines  
Chandelier base to floor 10' 6"  
3 Phase power supply  
ISDN line  
Wi-Fi enabled  
broadband connection