

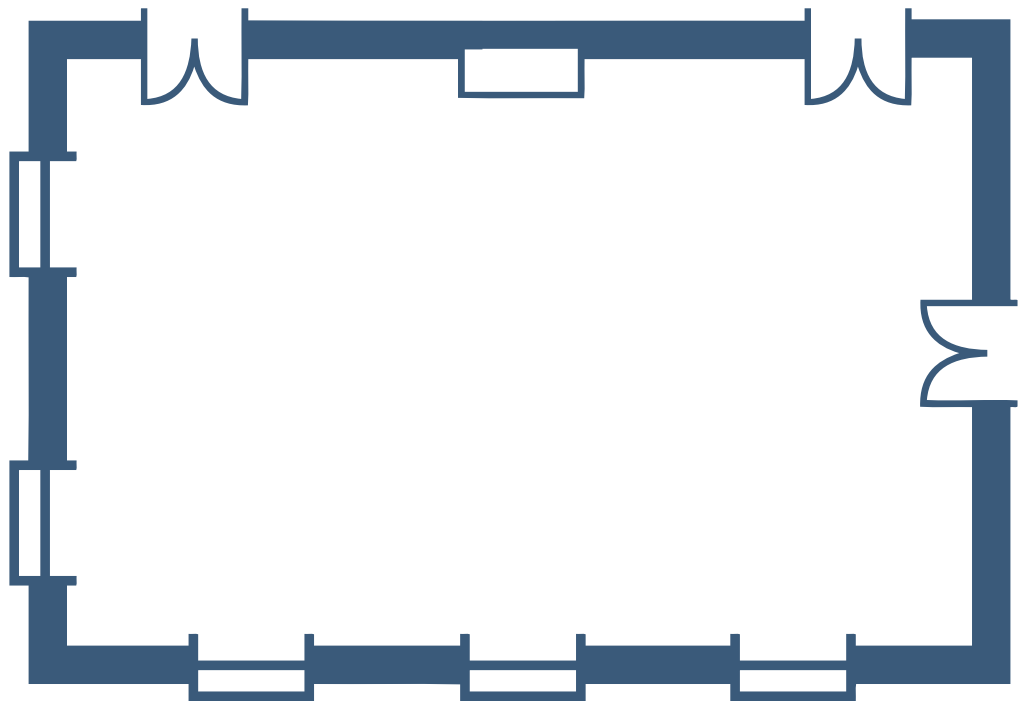
room layouts

WATERLOO ROOM

WATERLOO ROOM

27' x 43' (1,161 sq ft/107 sq m)

Ceiling height 18'
7 Double plug sockets
2 Extension lines/1 Direct line
Chandelier base to floor 8' 6"
ISDN line
Wi-Fi enabled
broadband connection

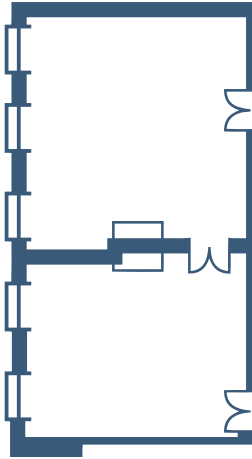


room layouts

TRAFALGAR ROOM 2

26' x 29' (754 sq ft/70 sq m)

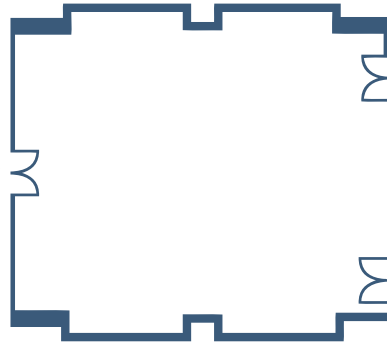
Ceiling height 18'
5 Double plug sockets
1 Single plug socket
1 Extension line/1 Direct line
Chandelier base to floor 7' 6"
ISDN line
Wi-Fi enabled
broadband connection



TRAFALGAR ROOM 1

26' x 20' (520 sq ft/48 sq m)

Ceiling height 18'
6 Double plug sockets
1 Extension line/1 Direct line
Chandelier base to floor 7' 6"
Wi-Fi enabled
broadband connection



BURTON ROOM

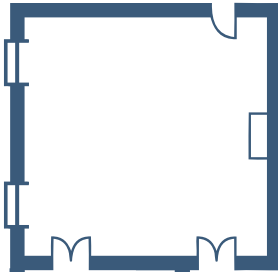
30' x 42' (1260sq ft/116 sq m)

Ceiling height 15'
10 Double plug sockets
1 Extension line/1 Direct line
Chandelier base to floor 7' 6"
3 Phase power supply
ISDN line
Wi-Fi enabled
broadband connection

ST JAMES ROOM 1

26' x 29' (754 sq ft/70 sq m)

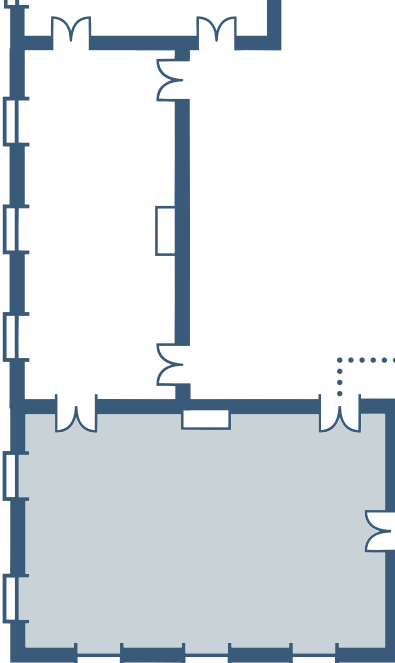
Ceiling height 19'
6 Double plug sockets
20 Data points
1 Extension line
Wi-Fi enabled
broadband connection



ST JAMES ROOM 2

40' x 16' (640 sq ft/60 sq m)

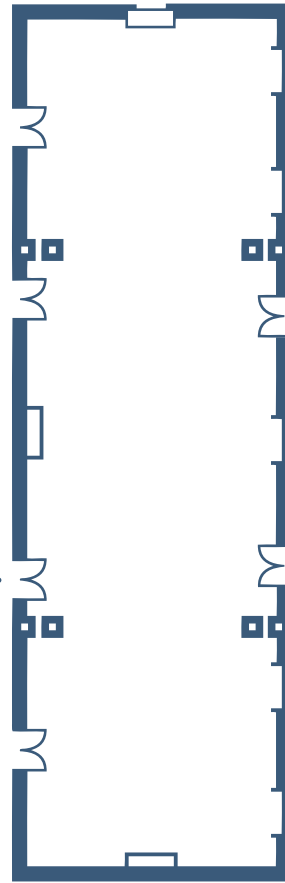
Ceiling height 18'
8 Double plug sockets
1 Extension line/1 Direct line
Wi-Fi enabled
broadband connection



WATERLOO ROOM

27' x 43' (1,161 sq ft/107 sq m)

Ceiling height 18'
7 Double plug sockets
2 Extension lines/1 Direct line
Chandelier base to floor 8' 6"
ISDN line
Wi-Fi enabled
broadband connection



NASH ROOM

30' x 100' (3,000 sq ft/278 sq m)

Ceiling height 20'
13 Double plug sockets
2 Extension lines/2 Direct lines
Chandelier base to floor 10' 6"
3 Phase power supply
ISDN line
Wi-Fi enabled
broadband connection