

116
PALL MALL

Events at
116 Pall Mall
by Searcys



SEARCYS
LONDON

EST. 1847
SEARCYS
LONDON
at
116
PALL MALL

116
PALL MALL
LONDON

116
PALL MALL
LONDON

History of 116 Pall Mall

116 Pall Mall was initially designed by famous and fashionable 19th century John Nash in the early 1820s.

The building's Regency exterior reflects Nash's signature style, which is evident in nearby structures such as those on Regent Street and Carlton House Terrace. Nash is also renowned for designing other notable British landmarks, including the Brighton Pavilion and Marble Arch.

116 is built on the site of Carlton House, a former London residence of the Prince of Wales prior to his accession to the throne as George IV in 1820. Carlton House was subsequently demolished when the King moved to the newly renovated Buckingham Palace.

The location, in the heart of London's refined and stylish "clubland" at the time, was then deemed fitting for the United Service Club. Building work took two years and was completed in 1828, £7,000 over budget and at a total bill of £45,000 (a figure in today's economy approximating £7.7 million).



		LONDON VENUE & CATERING AWARDS 2022	
		WINNER	SILVER
		BEST HISTORIC VENUE OR LIVERY HALL – 300+ ATTENDEES RECEPTION STYLE	MOST VERSATILE LONDON VENUE – UNDER 900 ATTENDEES RECEPTION STYLE

The Institute of Directors

116 Pall Mall is home to the Institute of Directors (IoD), a thriving membership community for directors in the UK and beyond, where you can connect with other leaders, develop your skills and be heard.

IoD membership

At a time when great directors have never been more important, the IoD offers professional development, valuable connections and influence.

With a wide range of benefits available to support you as a director, the IoD is a great place to connect and share knowledge.

Full membership:
£475 per year (£42.75 per month)

International membership:
£238 per year

iod.com/why-join-us

Professional development and training with the IoD

Whether you're starting or cementing your role as a company director the IoD can help you develop your existing business skills and broaden your knowledge with new ones.

Our world-class professional development is designed by directors for directors to help you and your senior leaders steer your organisation effectively and successfully supporting a shared commitment to lifelong learning.

We are the only institute to offer the internationally recognised Chartered Director Qualification.

With reduced rates for members on all our courses.

iod.com/professional-development





Event catering by Searcys

Catering for every occasion from meetings and conferences, to events and weddings in our stunning central London venue, our in-house catering partner Searcys has devised seasonal menus that stays true to British favourites while adding a contemporary twist.

Start the day by treating guests and delegates to a full English breakfast complete with all the works, or enjoy a healthy start with muesli and natural yoghurt, power shots and multi-seed porridge. Searcys has also introduced a number of healthier choices to help establish a balanced lifestyle throughout the day - opt to swap regular biscuit breaks for freshly blended smoothies, homemade granola, and low-fat yoghurts at no extra charge to keep your team fired up all day.

Our lunch options range from a selection of freshly prepared sandwiches with delicious fillings, or finger food and exciting salads. Our brand-new bento boxes are incredibly popular for meetings, right up to the hot fork buffets, which provide a more substantial catering option.

Finally, in the evening, elegant canapes, bowl food and drinks receptions lead into stunning private dinners prepared by our Head Chef.



We are also thrilled to have been awarded the Event Caterer of the Year at The Foodservice Cateys 2022.

Nash Room

Named in honour of the building's architect John Nash, the Nash is one of London's most beautiful event rooms and our most popular choice for larger gatherings.

Luxurious in style and steeped in grandeur, this 3,000 sq ft space comfortably welcomes 350 standing guests and 250 dining on round tables. It can also be arranged with sets and stages to suit any presentation or performance.

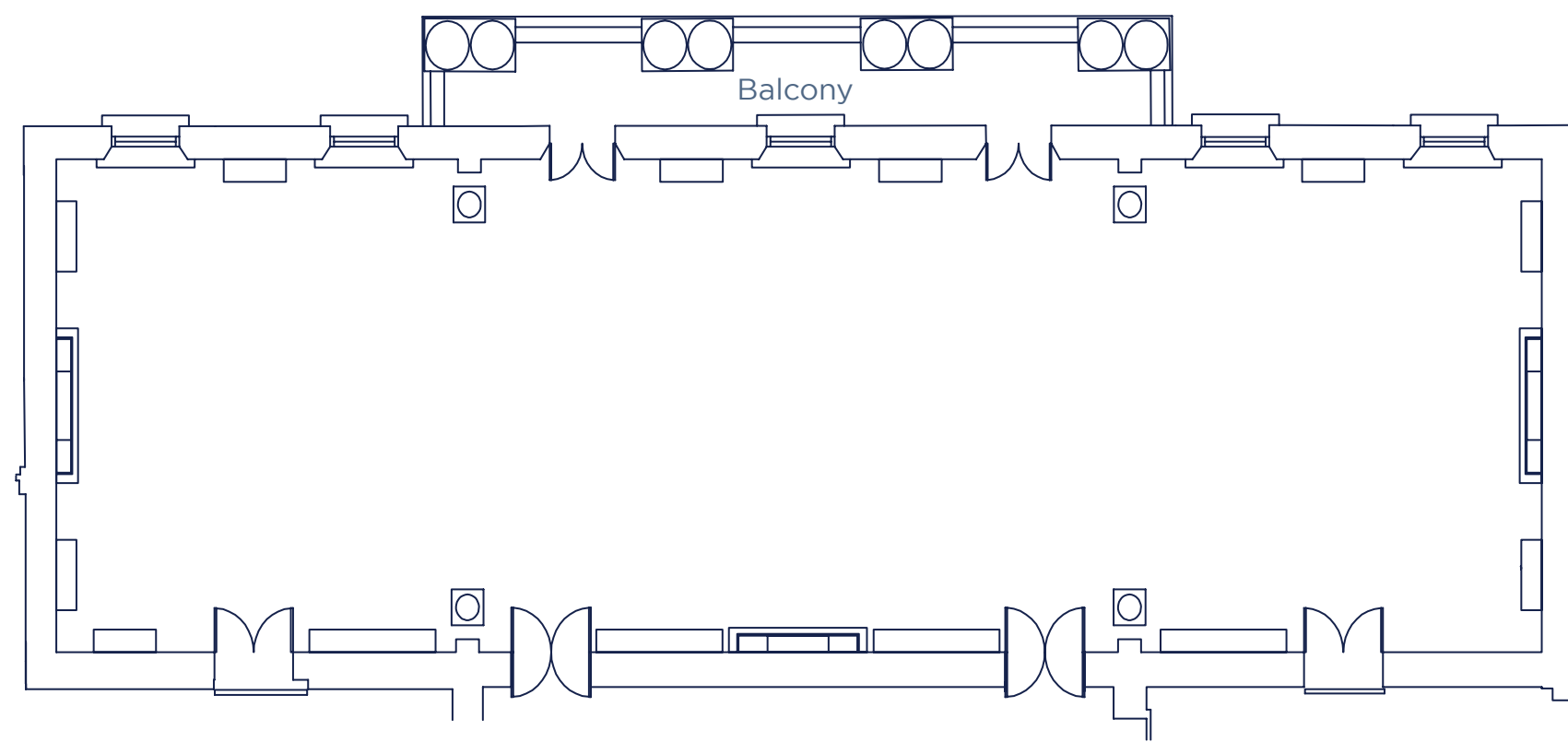
This spectacular space also links to the Waterloo Room and both rooms are often hired together to allow for a separate space that can be used for a drinks reception or networking. The Nash adjoins a beautiful balcony overlooking the gardens below which can also be booked, providing a space for guests to get some fresh air and enjoy the views.

IDEAL FOR

Gala dinners, awards ceremonies, conferences, drinks receptions, exhibitions, meetings, press launches

CAPACITIES

- 350 theatre style
- 180 classroom
- 176 cabaret style
- 250 dining
- 350 standing
- 90 u-shape



VIEWING BALCONY & GRAND STAIRCASE



Waterloo Room

This stunning double aspect room overlooks the iconic Pall Mall and Waterloo Place and is one of our most popular rooms.

It can be used as a dining room, standalone conference room with stage and sets, or as a breakout and networking room.

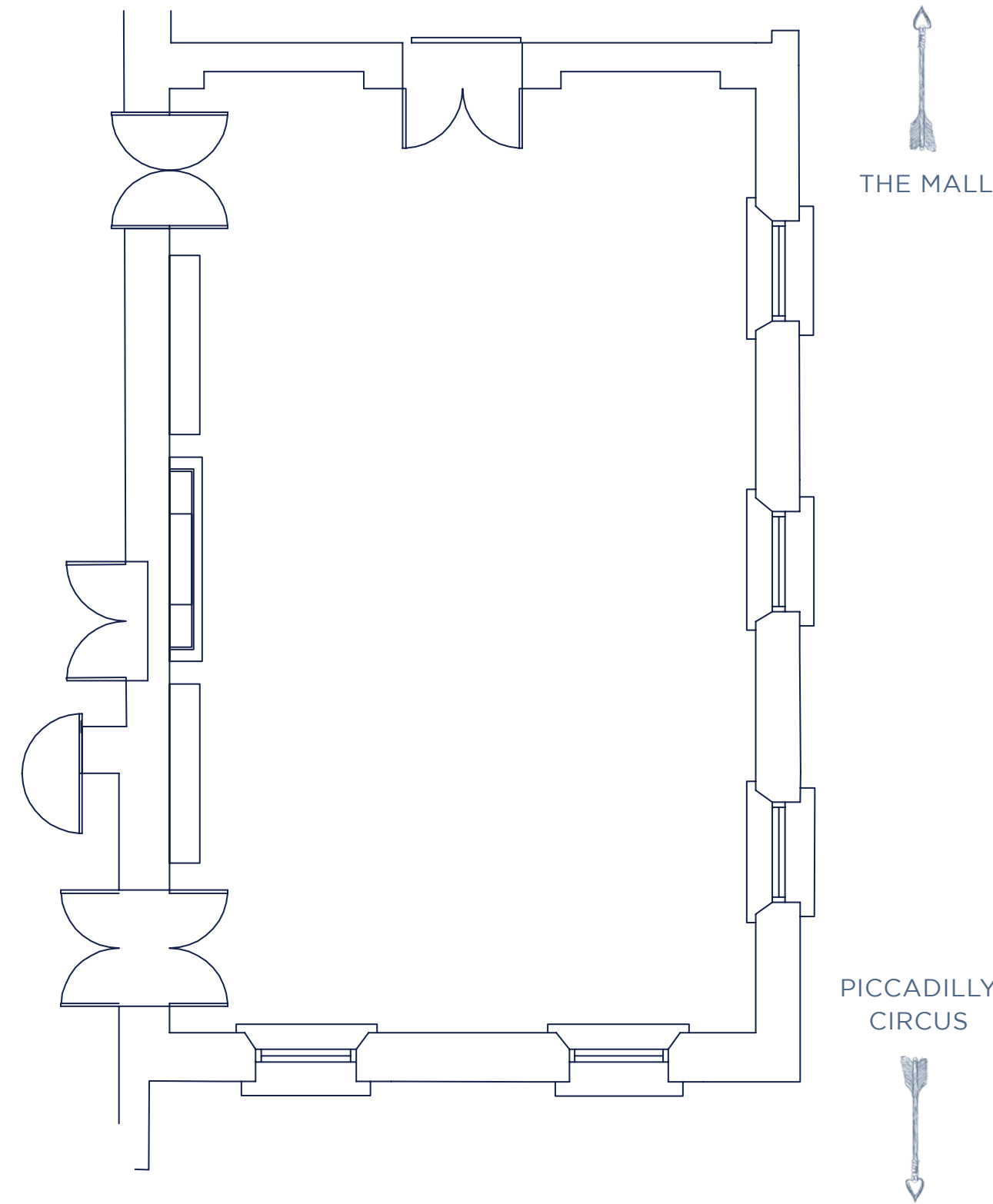
This beautiful space also links to the Nash Room and both rooms are often hired together to allow for a separate space for a drinks reception or networking. This room comes alive as night falls, with magnificent views of the Georgian architecture lit up just beyond the floor to ceiling windows.

IDEAL FOR

Dinners, conferences,
drinks receptions,
meetings, wine tastings,
Christmas parties

CAPACITIES

120 theatre style
70 classroom
56 cabaret style
80 dining
150 standing
36 u-shape





Burton Room

Majestic yet welcoming, this classic Georgian room is one of our most sought after for daytime events and combines perfectly with two adjacent rooms as breakout or catering spaces.

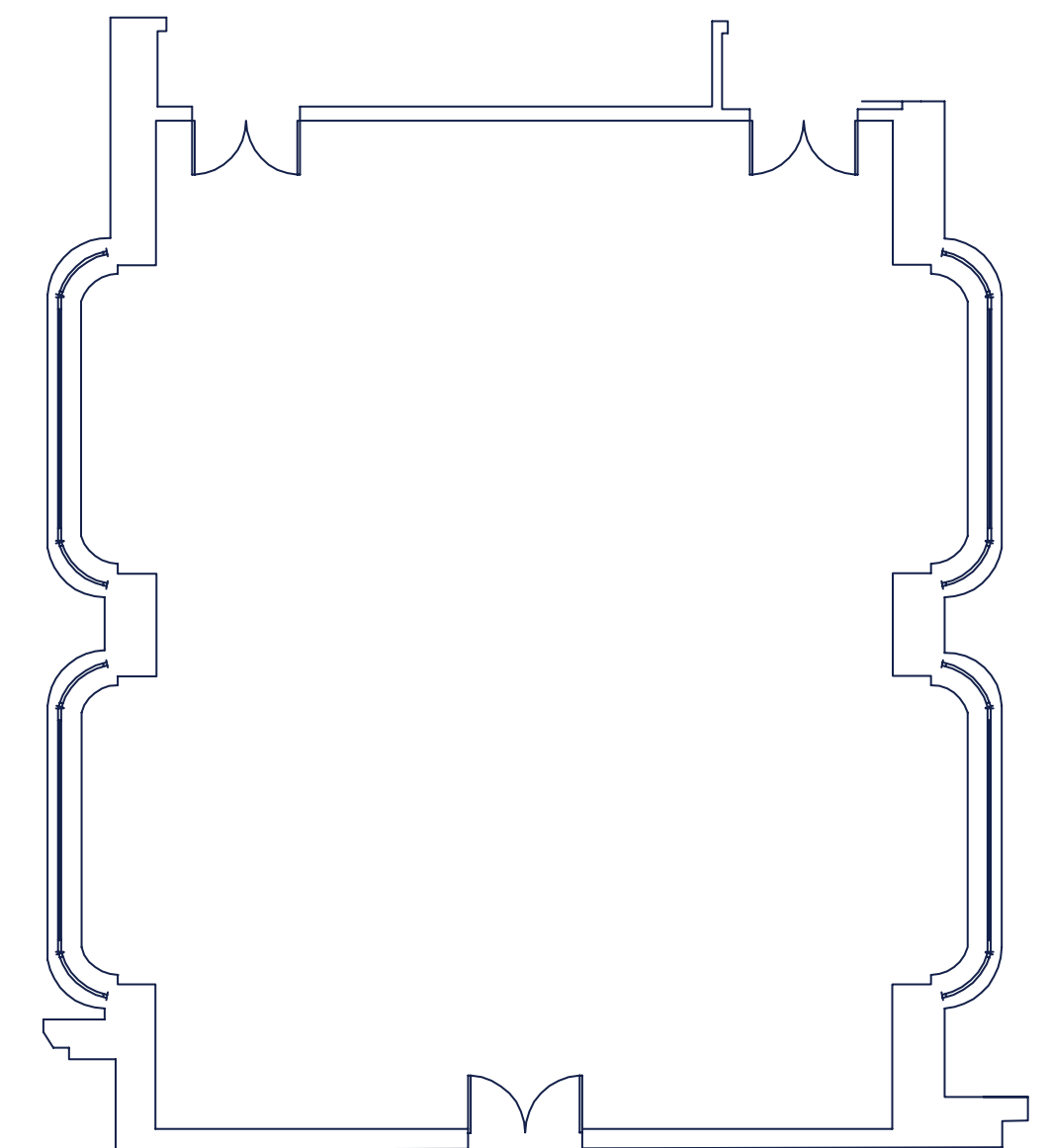
Extremely popular for daytime functions and with the versatility of being offered in conjunction with Trafalgar 1 and 2, this classic setting is well suited to seminars, talks and networking events. This is a classically striking room that offers a blank canvas for entertaining and is licensed for wedding ceremonies.

IDEAL FOR

Conferences, seminars, meetings, drinks receptions, networking events, Christmas parties

CAPACITIES

140 theatre style
50 classroom
72 cabaret style
100 dining
160 standing
40 U-shape



TRAFALGAR ROOMS 1 & 2



St James Rooms 1 & 2

This pair of regal rooms, with grand sash windows overlooking Pall Mall, are ideal for intimate events.

Easily opened up into one larger room or used separately, they give you the option of using one as a breakout or catering room, or expanding the space to suit your event.

These rooms can also be hired along with the other main function rooms around our balcony for bigger events and exhibitions that require multiple spaces.

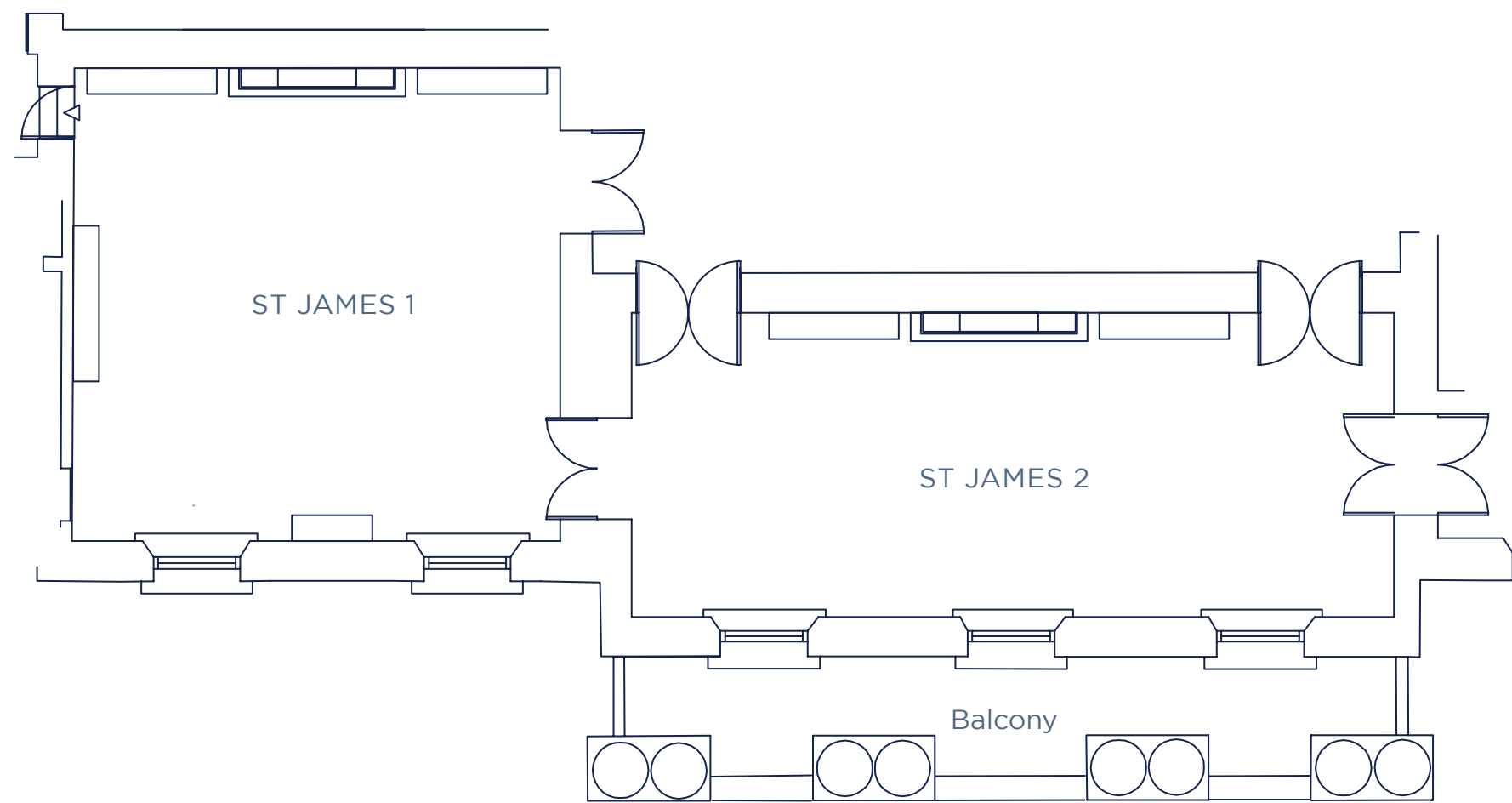
IDEAL FOR

Break out rooms, breakfast meetings, board meetings, intimate dinners/lunches, drinks receptions

CAPACITIES

St James Room 1:
50 theatre style
30 classroom
24 cabaret style
30 dining
50 reception
20 boardroom

St James Room 2:
40 theatre style
30 classroom
24 cabaret style
40 dining
50 reception
28 boardroom



TRAFALGAR SQ.

PALL MALL



Trafalgar Rooms 1 & 2

Two adjoining rooms full of original features and charm, Trafalgar 1 and 2 offer natural light and an airy ambience.

Their subtle, neutral colours and welcoming elegance make them infinitely versatile, giving you the option to use both rooms together and create a completely different space for your event.

Located opposite the Burton Room, these three rooms can be hired together providing the ideal solution to additional break-out spaces. They are also conveniently located next to a separate entrance, accessed by a beautiful antique lift.

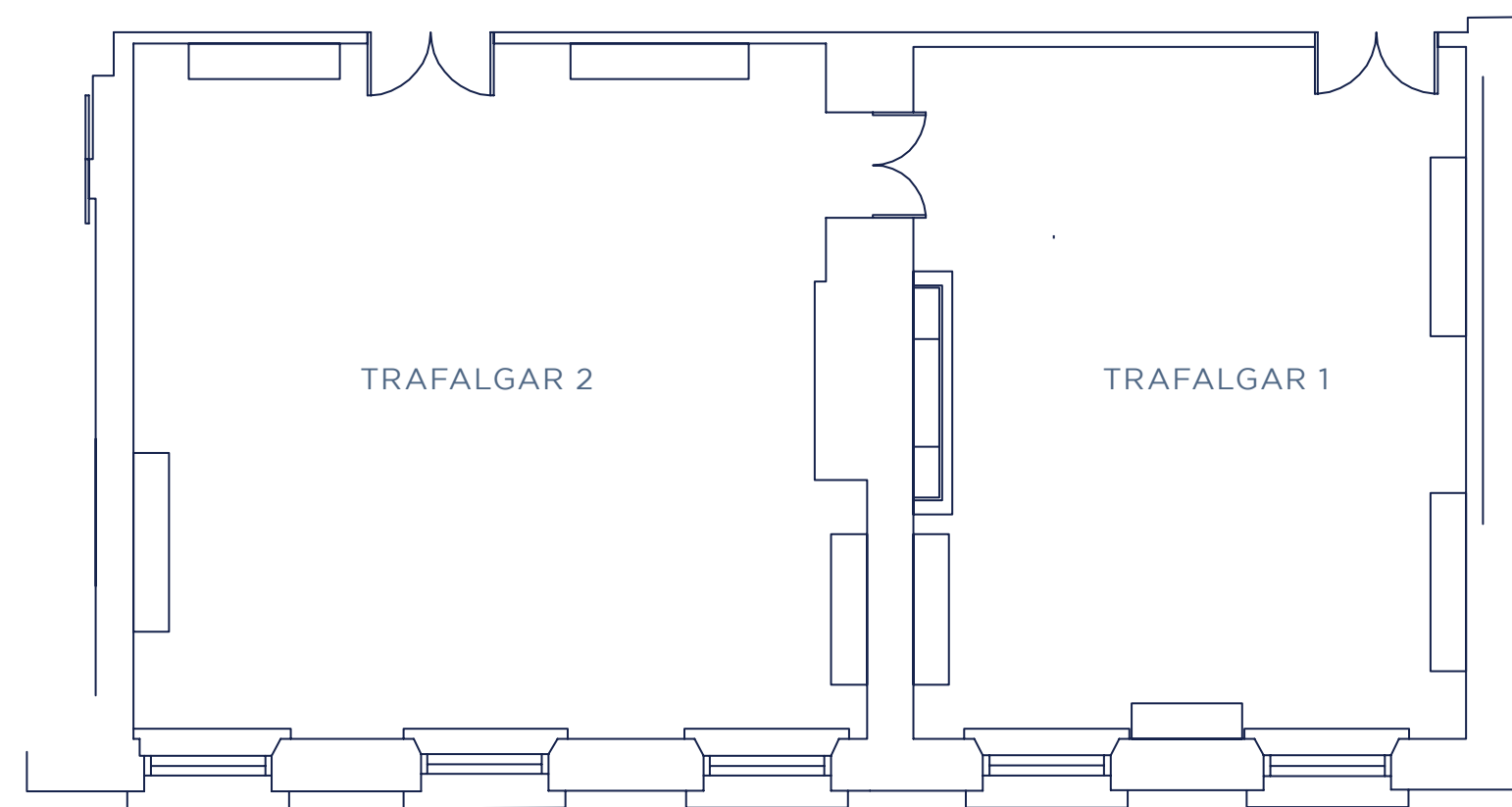
IDEAL FOR

Break out room, breakfast meetings, board meetings, intimate dinners/lunches, drinks receptions

CAPACITIES

Trafalgar Room 1:
40 theatre style
30 classroom
24 cabaret style
30 dining
50 reception
16 boardroom

Trafalgar Room 2:
50 theatre style
30 classroom
26 cabaret style
40 dining
70 reception
20 boardroom



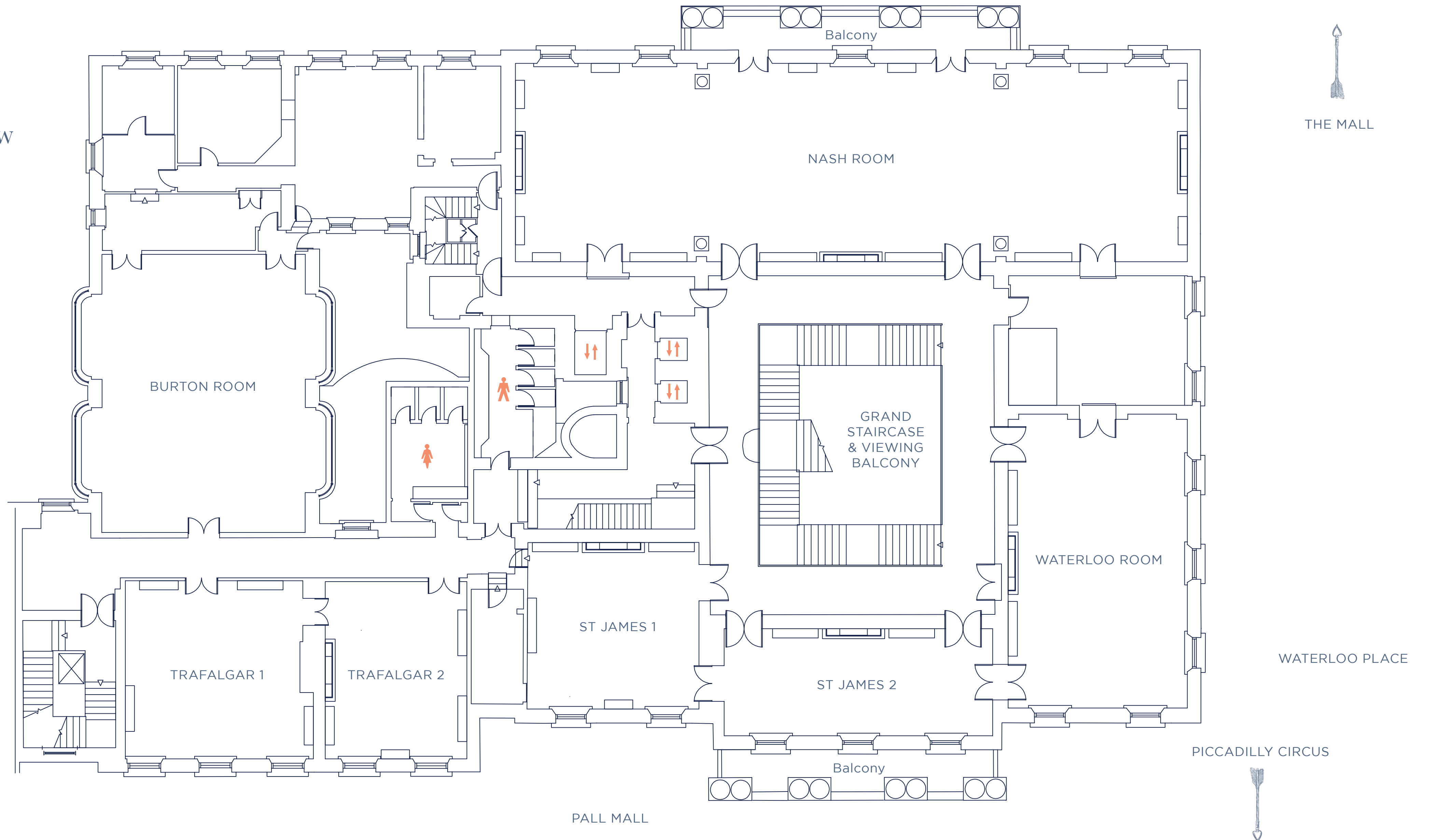
TRAFALGAR SQ.

PALL MALL



116 Pall Mall

Second floor overview



← TRAFALGAR SQ.

PALL MALL

PICCADILLY CIRCUS

↑ THE MALL

The Link & Business Centre

Our purpose built, state-of-the-art training facility.

Comprised of two floors with 25 various sized meeting rooms, including flexible training suites, coaching rooms, audio-visual equipment, a separate reception, breakout areas, private access via our stunning restored glass lift, alongside a self-serve catering point and barista bar.

These unique training facilities have been designed with a range of different spaces that are perfect for training courses, business meetings, seminars, team away days, webinars, filming, coaching and much, much more.

CAPACITY

From 2 to 40 guests

HIRE TYPE

By the day, half day or evening.
Hourly rates are available for last minute bookings.

LAYOUTS

Theatre style, boardroom, cabaret style, U shape. There is also a private entrance and dedicated reception, with six high tech rooms, including breakout areas.

AV EQUIPMENT

Complimentary wi-fi, projector screens, plasma screens, video conferencing, recording facilities, click share, power docking.

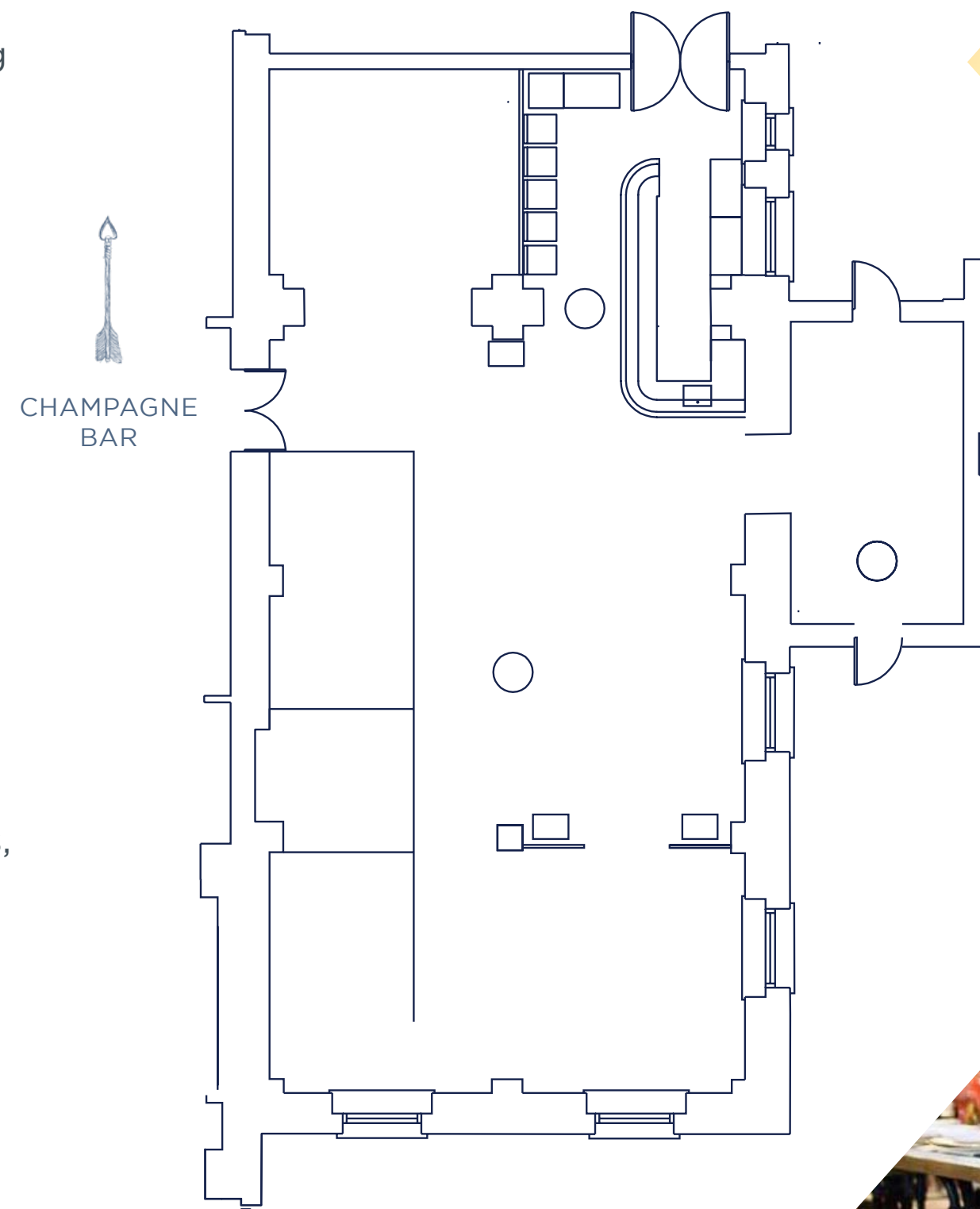


Café Duke

Café Duke was created from the original washrooms for officers of the United Service Club.

Unique, quirky and filled with original features, it has served as a filming location for blockbuster Batman movie The Dark Knight, and the award-winning TV drama Downton Abbey. With original tiled walls, floors and beautiful ceiling arches, the room has striking architecture to wow your guests.

If you are looking to hire an unusual venue to hold a dinner, networking event or drinks reception, Cafe Duke is the ideal setting. It also features its own permanent bar and serving area.



IDEAL FOR

Drinks receptions, parties, private dining, networking events, wine tastings, Christmas parties

CAPACITIES

120 standing
60 dining



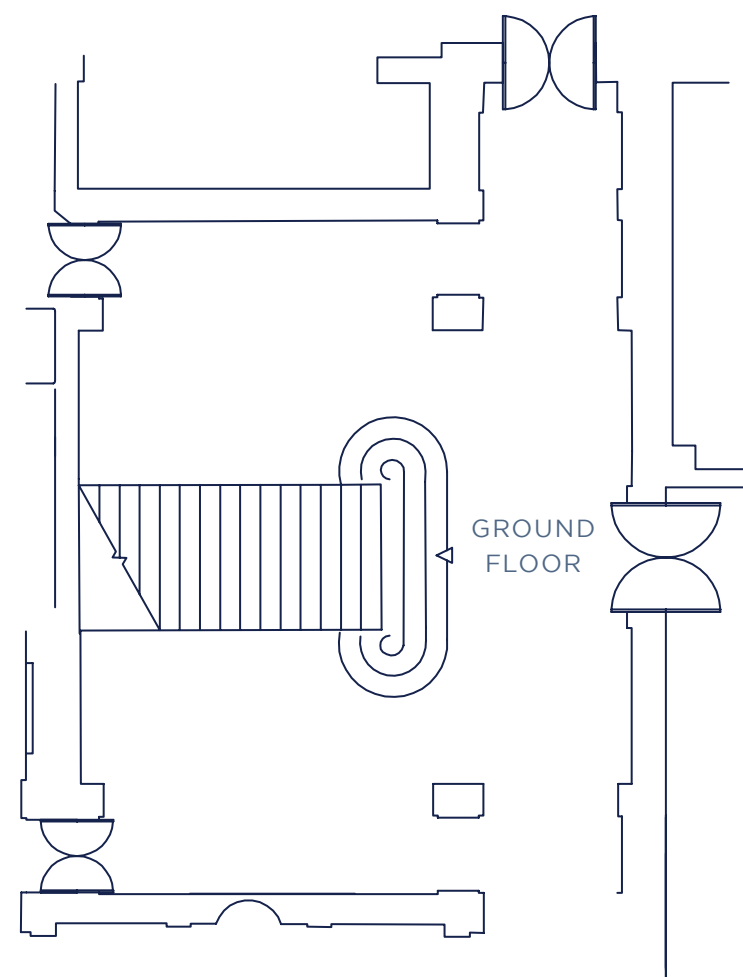
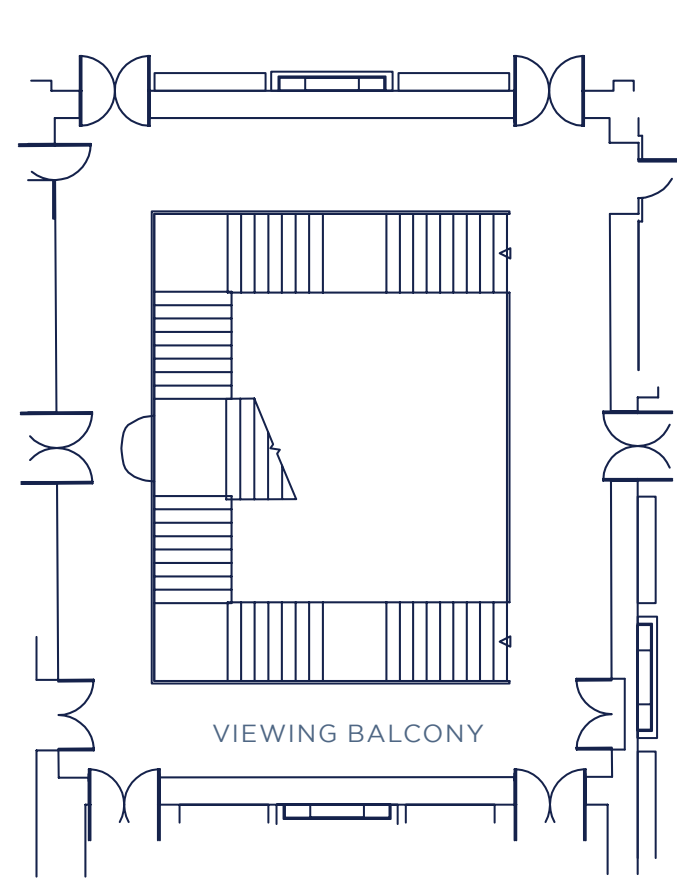
WEEKEND & EVENING HIRE ONLY

Grand Staircase & Gallery

Our magnificent staircase is one of the most iconic features of 116 Pall Mall.

With spectacular sweeping lines, gilded banisters, statues, and paintings, its pièce-de-résistance is a 15ft original chandelier given by George IV in the early 19th century to commemorate the Battle of Waterloo.

The Gallery can be used as a registration area for the Nash, Waterloo, and St James rooms, and is often used to display table plans and guest lists. It also makes a wonderful viewing space for wedding guests, overlooking a ceremony on the grand staircase.



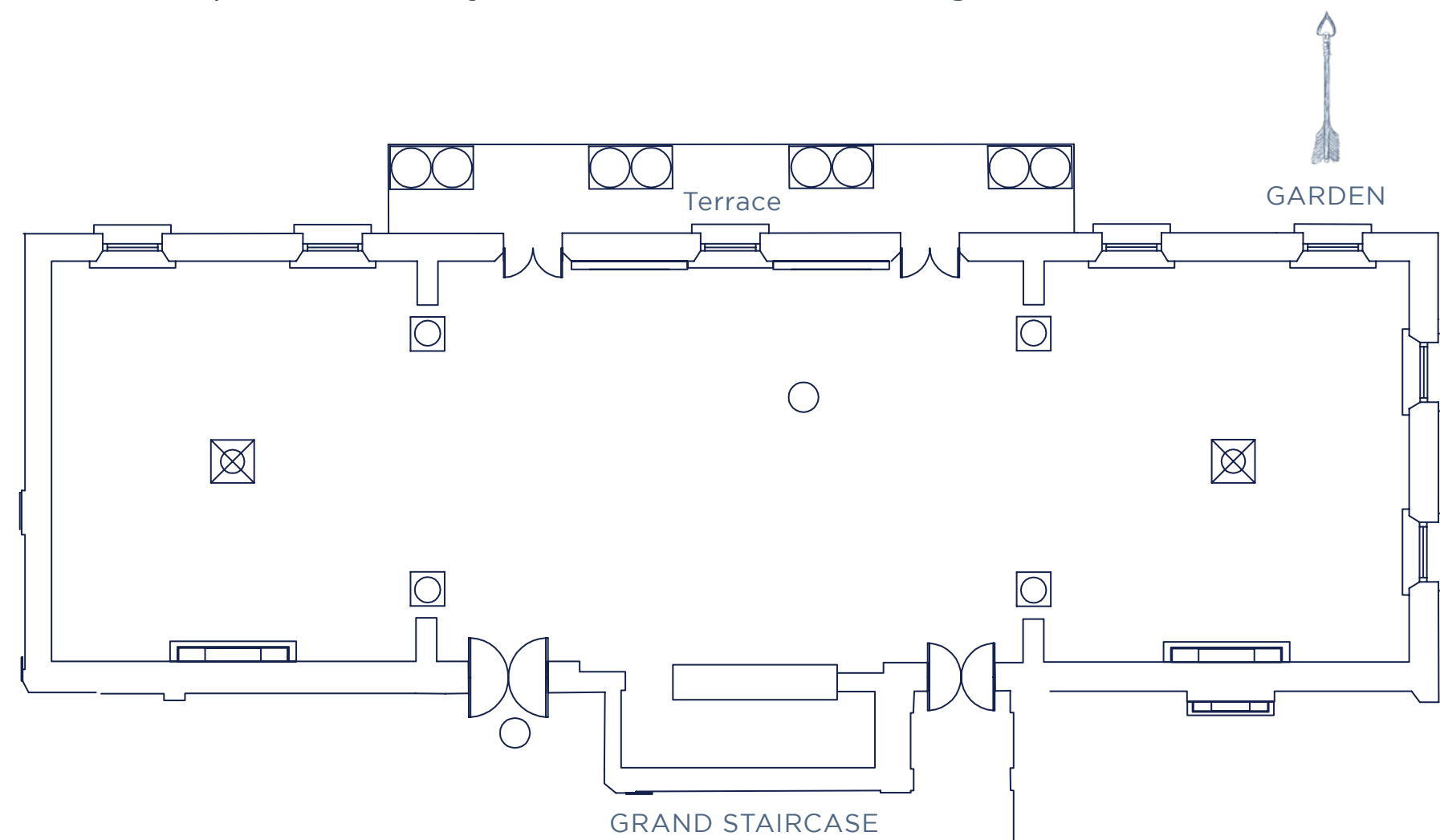
WEEKEND & EVENING HIRE ONLY

Carlton Room

Once the Smoking Room of the United Service Club, The Carlton Room is a richly decorated space with dramatic Ionic columns finished in marble-esque scagliola.

The walls are lavishly covered in gold leaf on linen, adding a real sense of glamour and opulence to the room. A popular space for large-scale parties and celebrations, The Carlton provides a luxurious setting for any special event, with the option to add a DJ and dancefloor and round tables for dining.

The south facing doors open onto a beautiful private terrace with views across the garden and for this reason, the Carlton has become a popular space to hire for summer parties - providing the ideal shelter for unpredictable weather! Enjoy the sun in tranquil green surroundings - a rarity in central London, perfect for company events, drinks receptions, birthday celebrations or networking events.



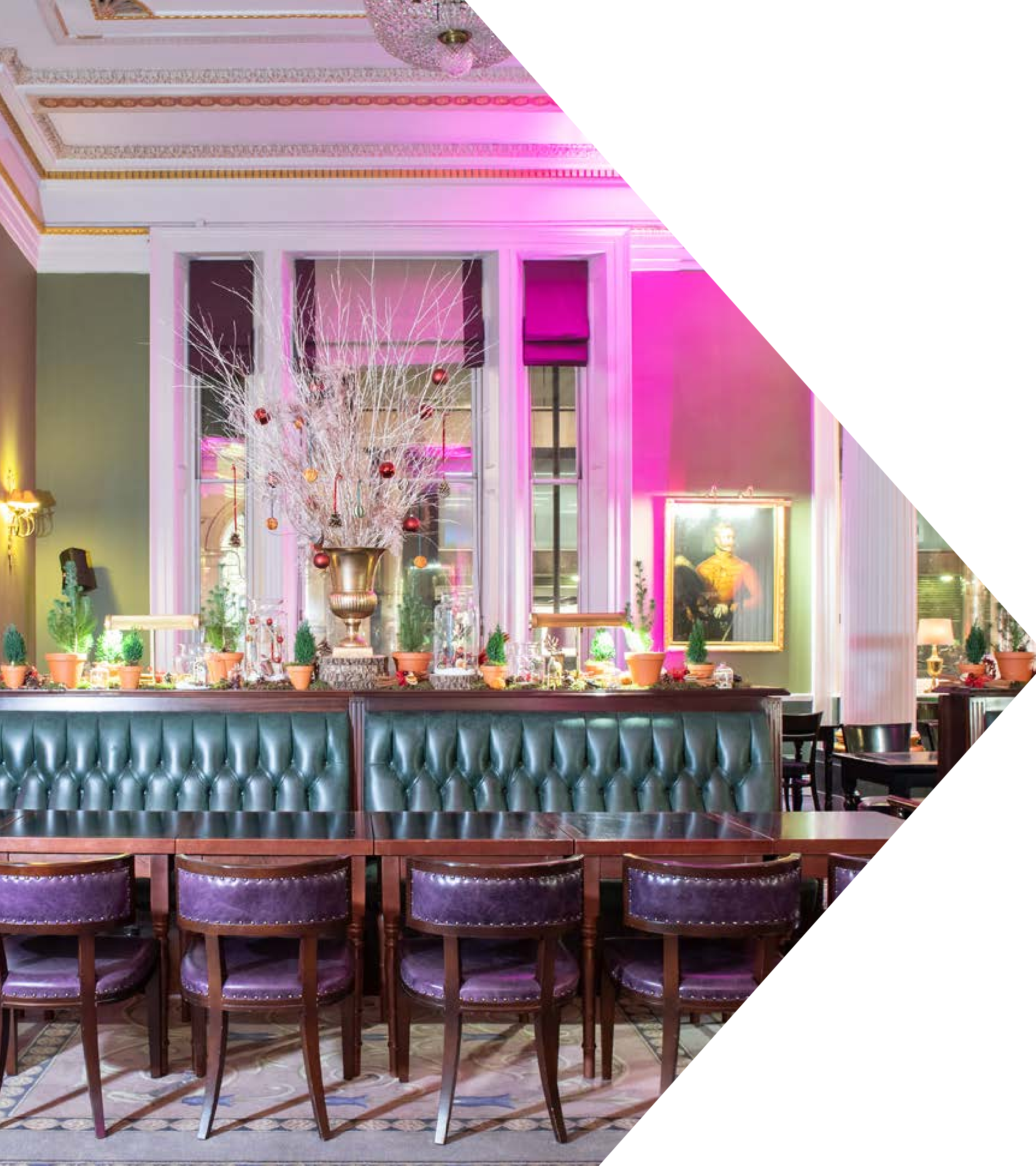
IDEAL FOR

Drinks receptions, gala dinners, weddings, exhibitions, networking events, Christmas parties

CAPACITIES

150 dining
300 standing





WEEKEND & EVENING HIRE ONLY

Directors' Room

A space full of history.

Part of Nash's original structure, the Directors' Room is one of our biggest spaces. With palatial high ceilings and long Chesterfield-style banquettes, its layout offers flexibility, charm and a truly original setting for your event. This room, situated adjacent to the lobby

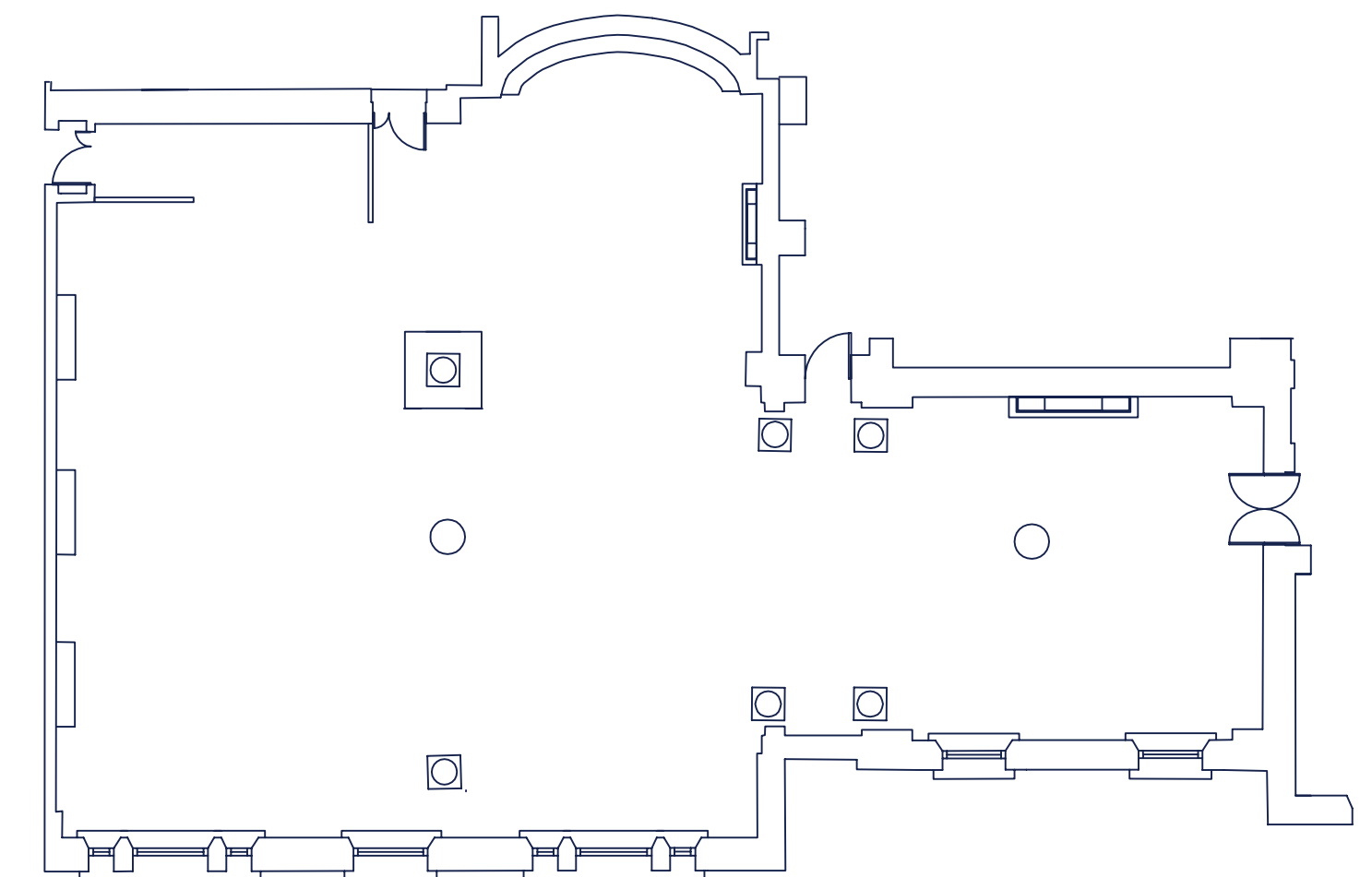
and reception area of 116, provides convenient access for your guests to seamlessly transition from entering the building to your event. Boasting bright natural daylight and airy ambiance, its floor-to-ceiling windows offer stunning views of the iconic Pall Mall.

IDEAL FOR

Drinks receptions, gala dinners, weddings, exhibitions, networking events, Christmas parties

CAPACITIES

250 dining
400 standing
200 theatre



← TRAFALGAR SQ.

PALL MALL →



WEEKEND & EVENING HIRE ONLY

Morning & Spears Room

The Morning & Spears has played host to a MasterChef semi-final, as well as a variety of brilliant business events and once-in-a-lifetime family celebrations.

Welcoming groups of four to 80 in a dining arrangement, this bright and spacious room overlooking Waterloo Place is an inviting spot to dine. With a neutral colour palette and bright, dual-aspect windows, the Morning Room is popular for private dining and celebrations.

The Spears Room adjoins the Morning and provides the ideal break-out or catering space or hire this separately for 24 seated guests.

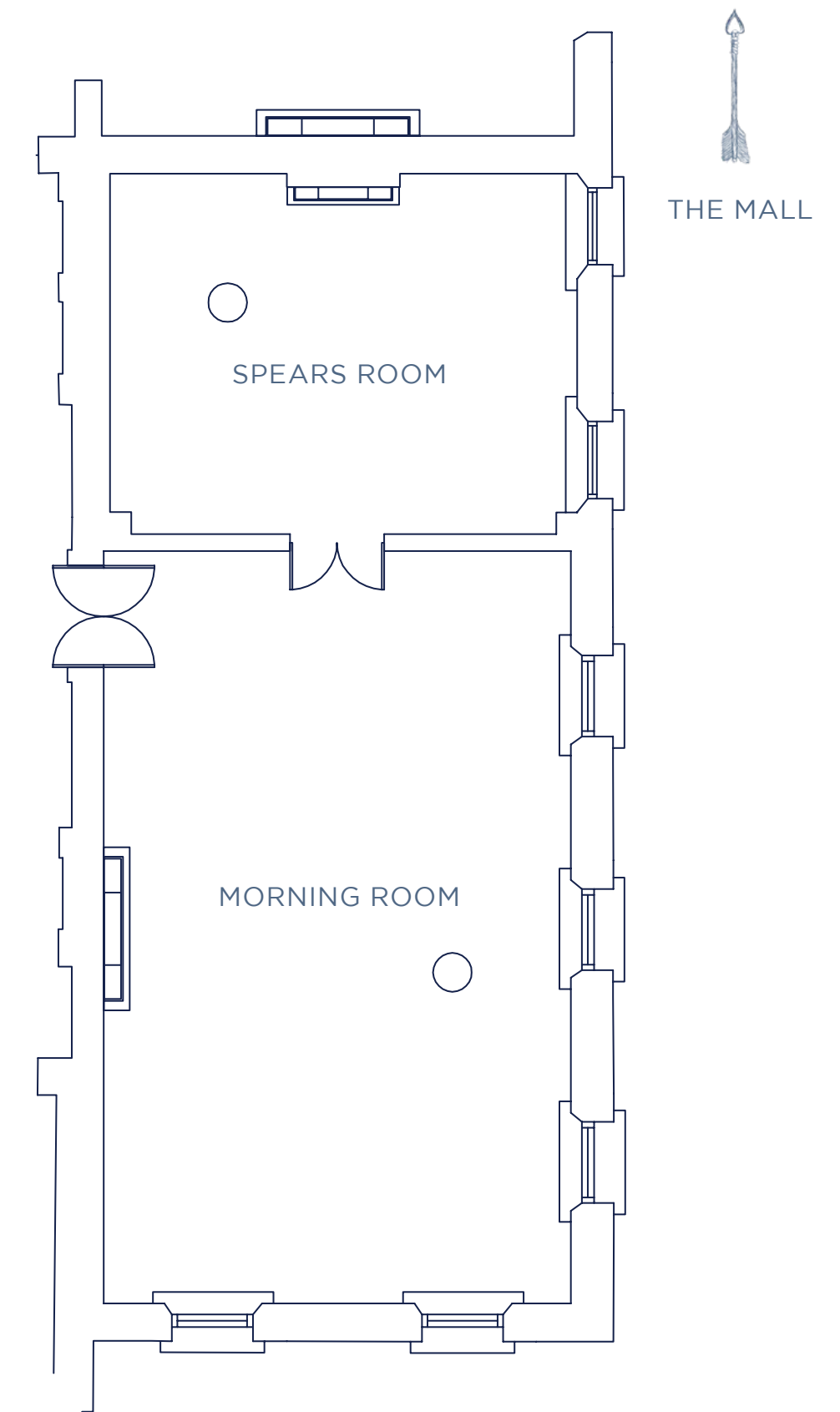
IDEAL FOR

Drinks receptions, private dining, exhibitions, networking events, Christmas parties

CAPACITIES

Spears Room:
24 boardroom

Morning Room:
60 dining
120 standing



WEEKEND & EVENING HIRE ONLY

The Champagne Bar

Once the wine cellars of the Prince of Wales and the United Service Club, guests enter the hidden underground Champagne Bar through a pair of stunning iron gates that served as the original cellar doors.

With vaulted ceilings and exposed brickwork, the space is full of unique original features and packed with character.

While this space operates as a Champagne Bar during the day and evenings, located at the side of the bar are two separate annexes which provide the ideal setting for drinks receptions, private dining, and networking events. These can be opened out into one space allowing for 48 seated guests or closed off to create two separate spaces for 24 seated guests.

The entire bar can also be hired privately on evenings and weekends for up to 160 standing and is always a popular choice for wedding after-parties or birthday celebration.

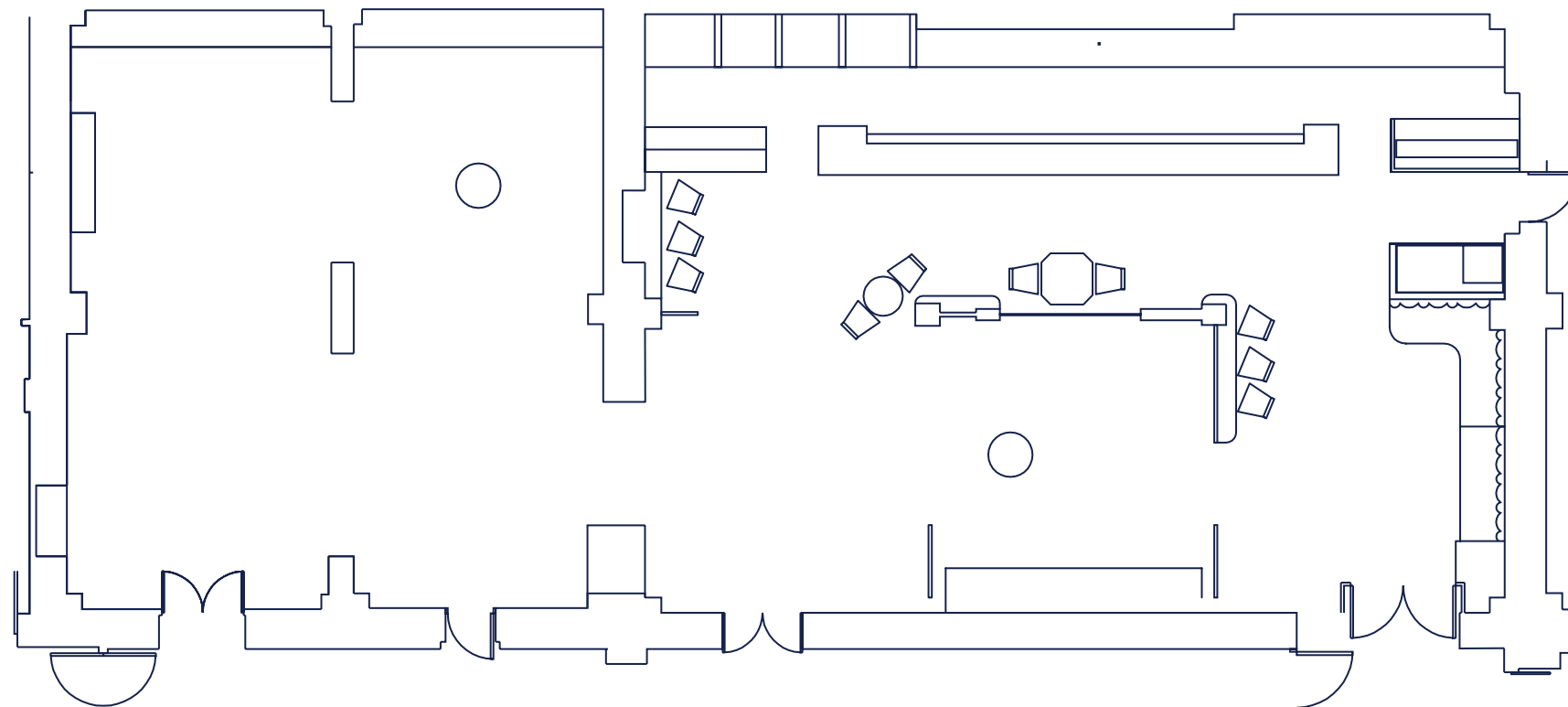
IDEAL FOR

Drinks receptions, gala dinners, weddings, exhibitions, networking events, Christmas parties

CAPACITIES

Champagne Bar:
160 standing

Annexe:
48 seated and 50 standing





116 PALL MALL, LONDON SW1Y 5ED

T: 020 7451 3107

E: INFO@116PALLMALL.COM

116PALLMALL.COM

[SIGN UP TO OUR NEWSLETTER](#)



EST. 1847
SEARCYS
LONDON